

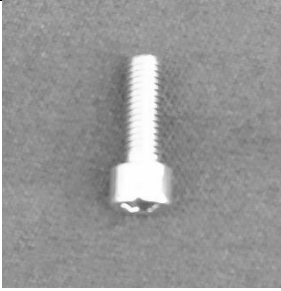
ISTRUZIONI DI MONTAGGIO/ASSEMBLY INSTRUCTIONS

SPIDER



Like us on
Facebook

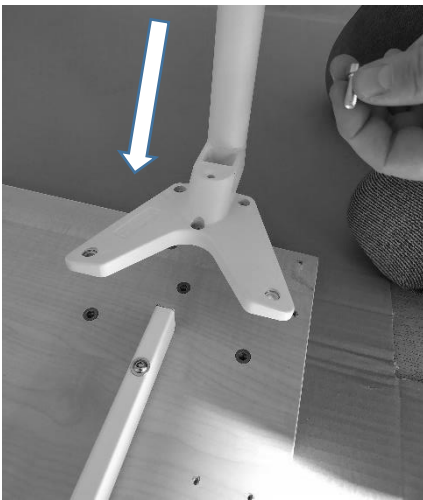
MONTAGGIO GAMBE/LEG ASSEMBLY



VITE M6x18
M6x18 SCREW
X 40

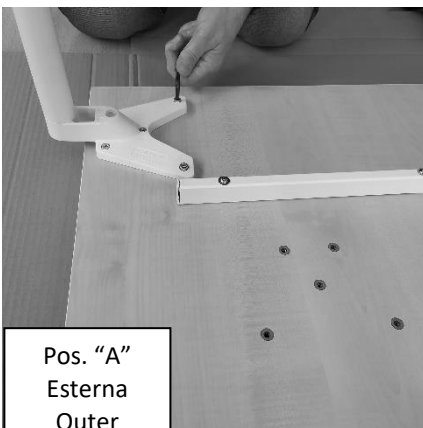


GAMBA
LEG
X 8



Fissare le gambe sotto al piano di gioco utilizzando le viti M6x18 e una chiave a brugola nr. 5.

Secure the legs under the table using the M6x18 screws and a hex key no. 5.

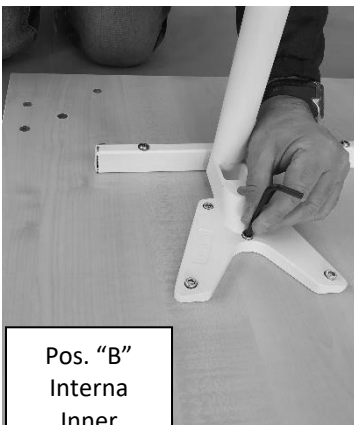


Pos. "A"
Esterna
Outer

Fissare la gamba in "A" per metterla in posizione esterna.

Fix the leg in "A" to put it in outer position.

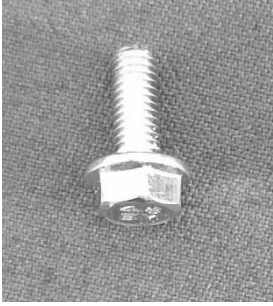
**OPPURE
OTHERWISE**



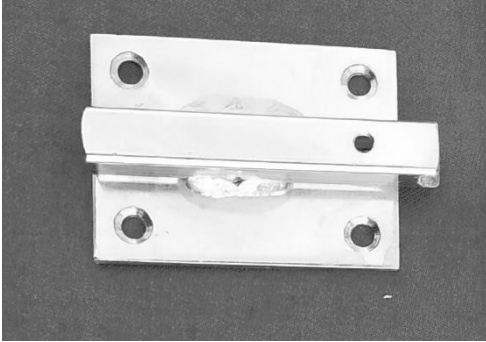
Pos. "B"
Interna
Inner

Fissare la gamba in "B" per metterla in posizione interna.

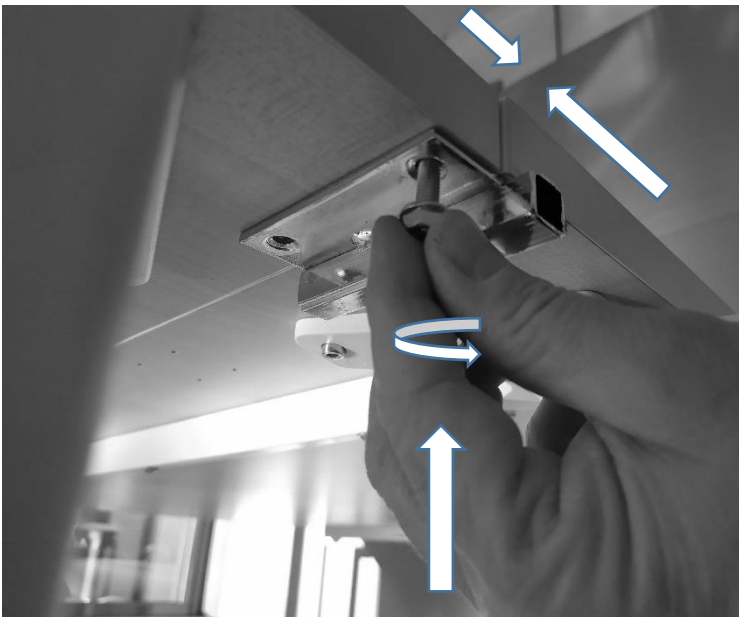
Fix the leg in "B" to put it in inner position.



VITE M6x16
M6x16 SCREW
X 8



PIASTRA TENDIRETE
NET TENSIONING PLATE
X 2

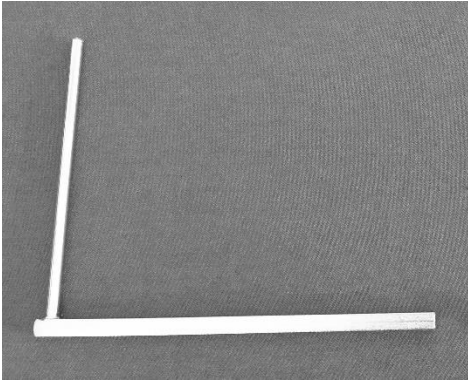


Avvicinare i due pannelli del tavolo e fissare la piastra tendirete utilizzando le viti M6x16 e una chiave esagonale nr. 10.

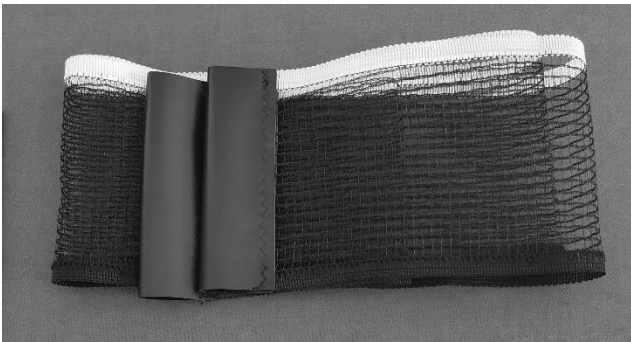
Bring the two panels of the table close together and fix the tensioner plate using the M6x16 screws and a wrench no. 10.



VITE A FARFALLA
BUTTERFLY SCREW
X 2



TENDIRETE
NET TENSIONER
X 2



RETE
NET
X 1



Inserire i tendirete nella fessura apposta della piastra e fissare con le viti a farfalla.

Insert the tensioners in the appropriate slot of the plate and fix with the butterfly screws.



Montare la rete sul tendirete.

Place the net on the tensioner.