

# ***RAINBOW***

## ***ASTE PASSANTI***

### ***STRAIGHT THROUGH POLES***



# ISTRUZIONI DI MONTAGGIO

Congratulazioni per aver acquistato un Calciobalilla  
Per il montaggio del calciobalilla serviranno:



- Cacciavite a croce
- Chiavi a stella n° 10 - 13 - 17
- Martello

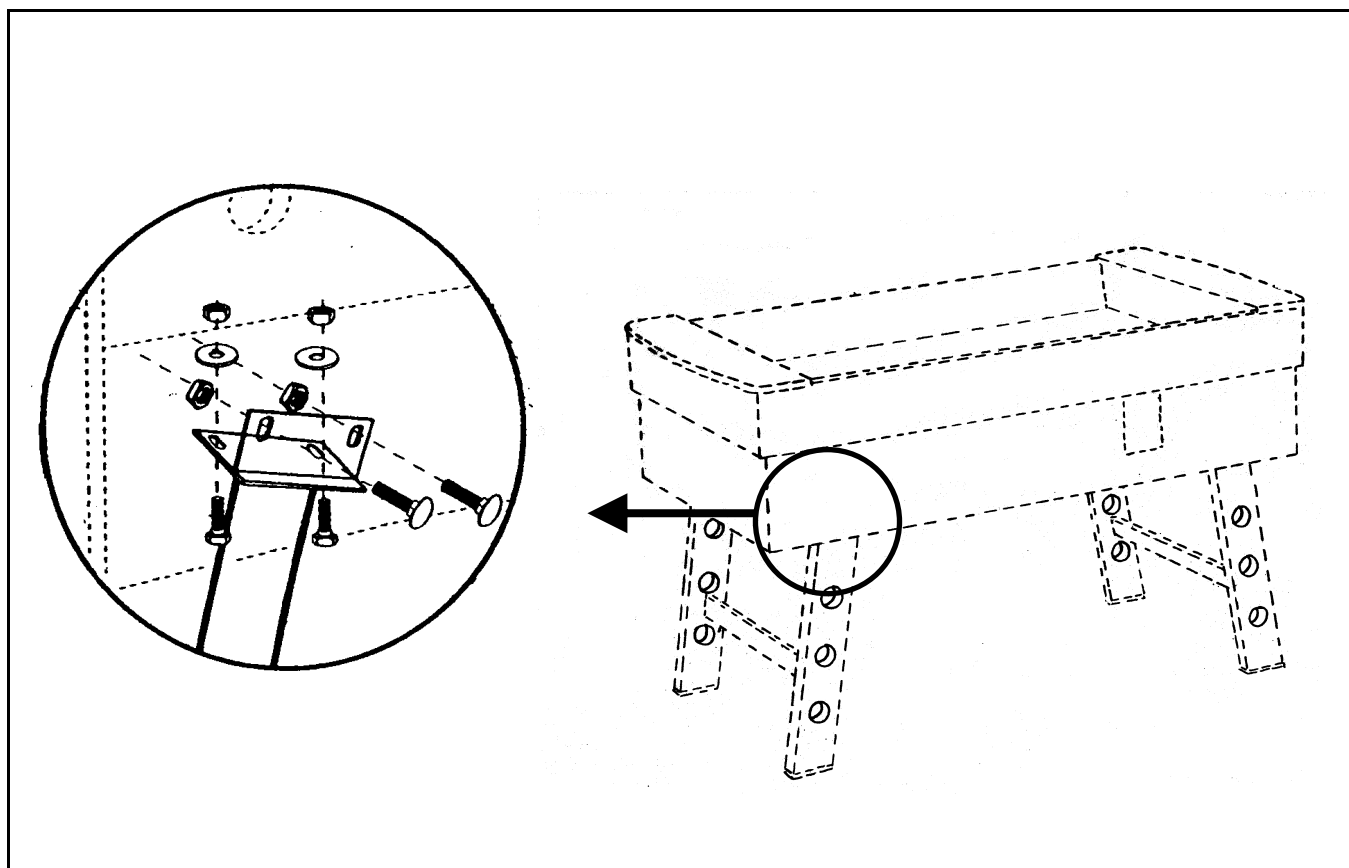
## ASSEMBLY INSTRUCTION

Congratulations on acquiring a **FAS** Table Football Game.  
You will need:

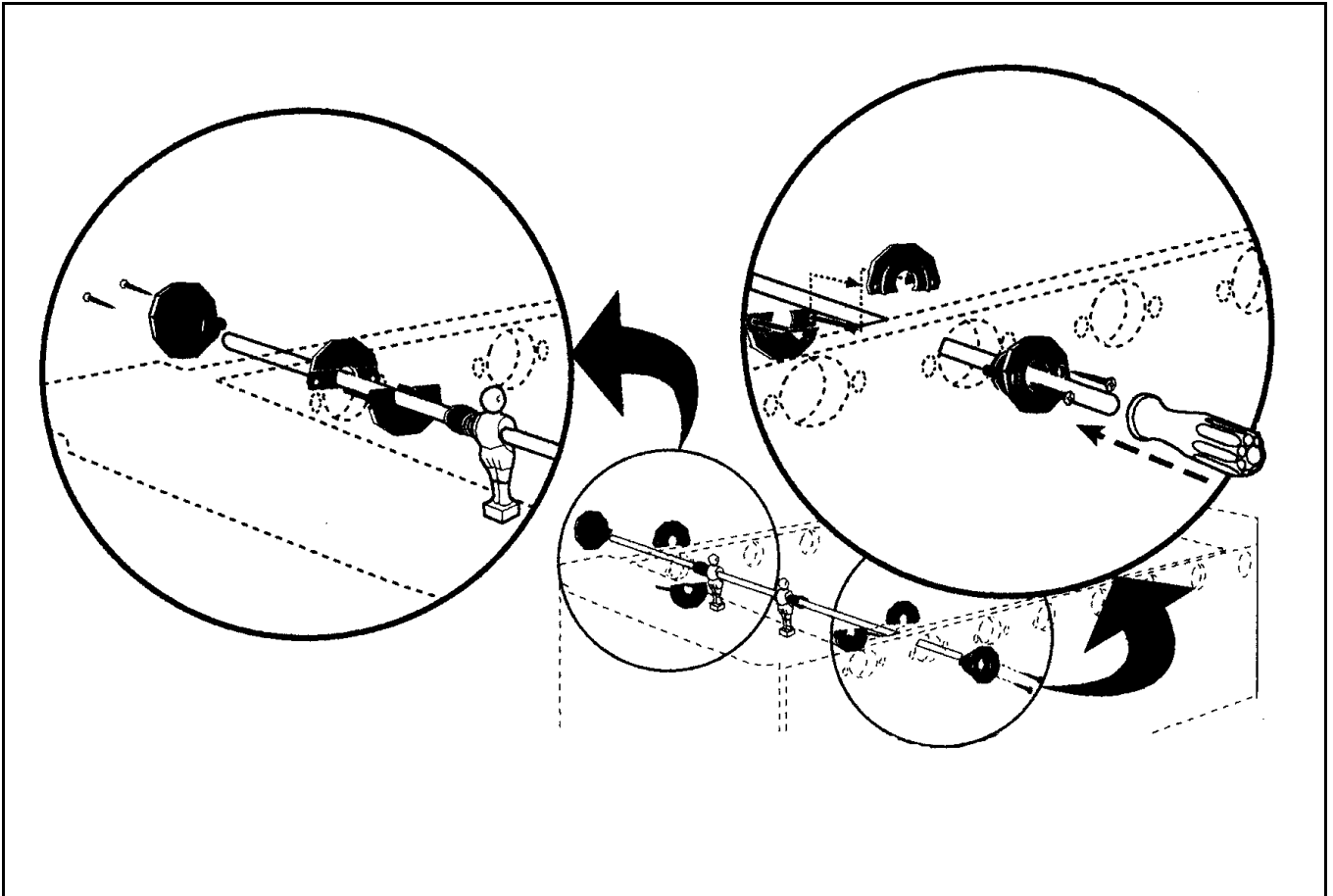
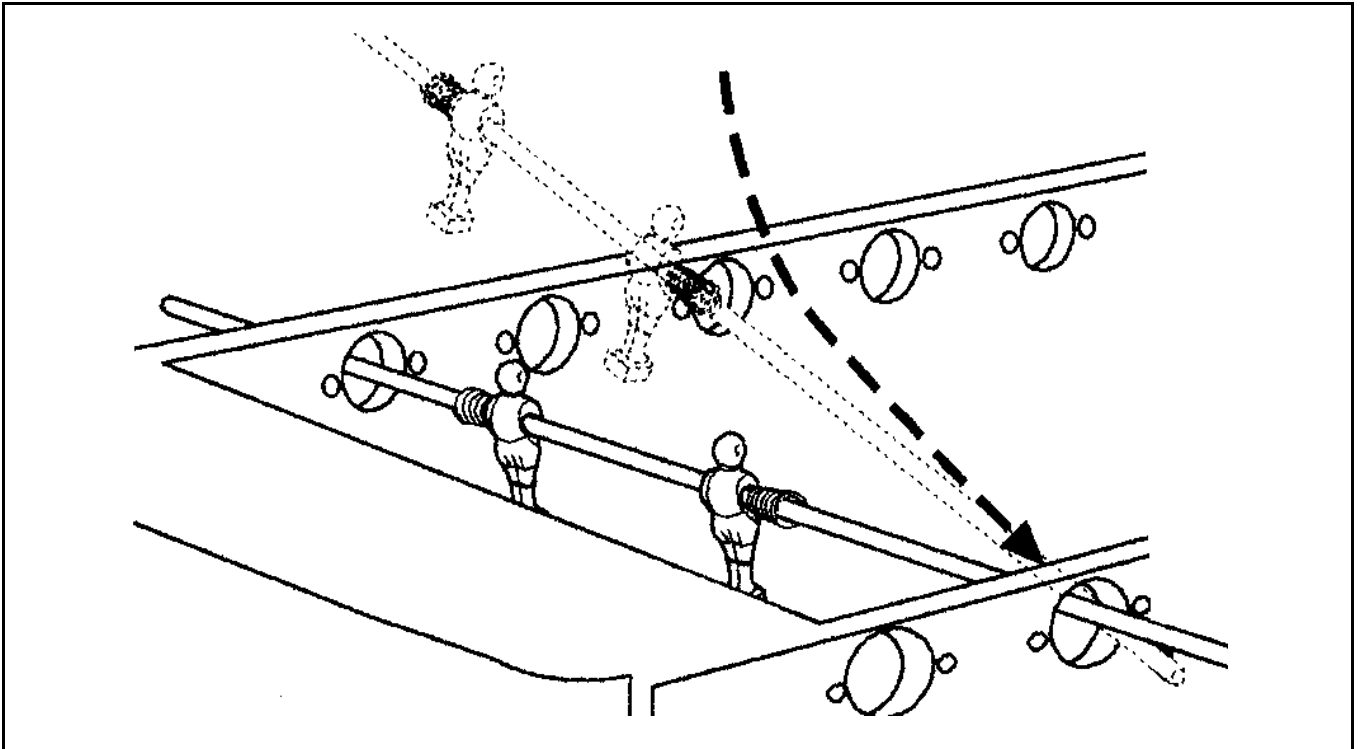


- Screwdriver
- Spanner n° 10 - 13 - 17
- Hammer

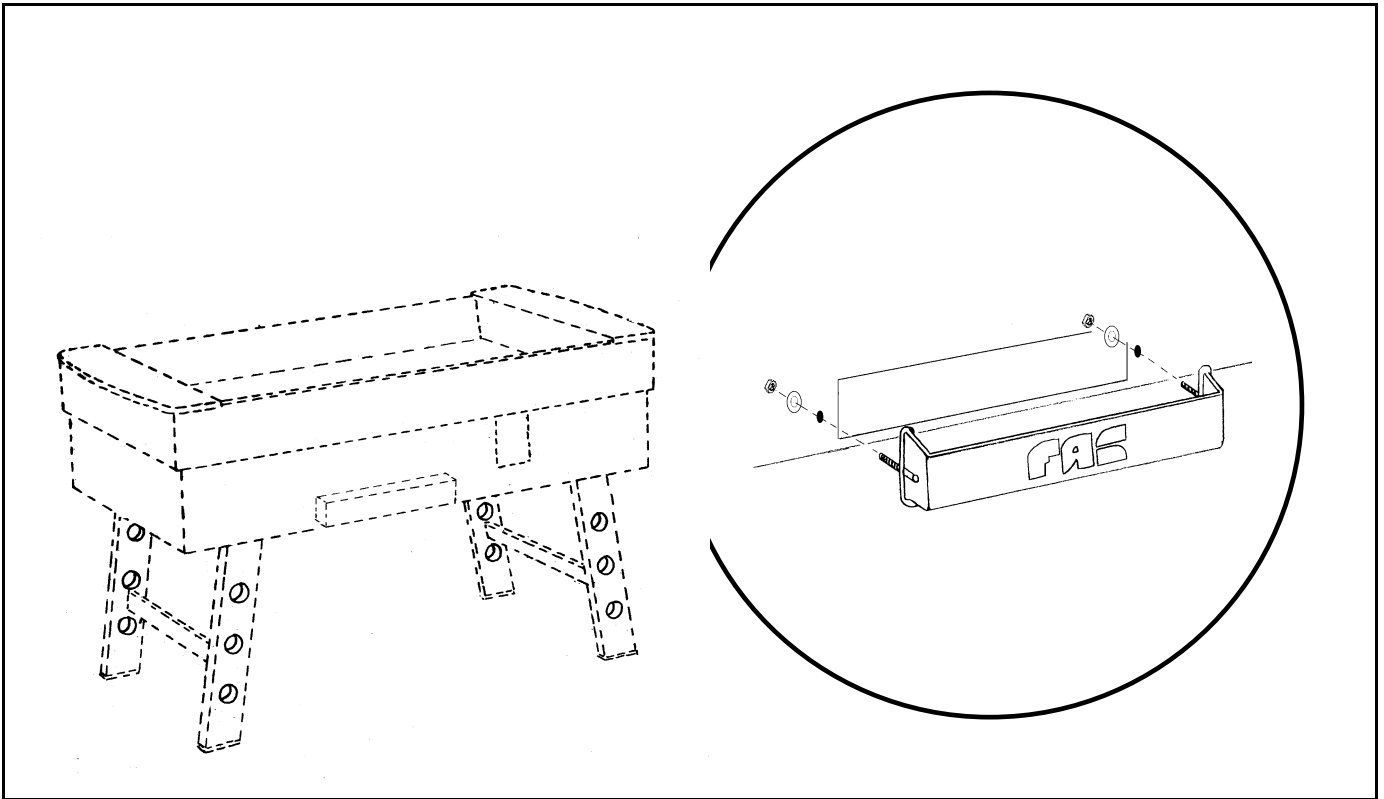
### Fissaggio delle Gambe – Attaching the Legs



## Fissaggio delle Aste – Fitting The Poles



## Fissaggio del Frontalino – Fitting the Ball Collector



## Fissaggio della Gettoniera – Fitting the Coin Mechanism

